

Elevator Buckets

Tapco offers elevator buckets for every need and for all types of products.

| Size (Nominal) Inches | Polyethylene, Nylon, Urethane or Fabricated Steel | | | | | Nylon, Ductile Iron, Polyethylene, Urethane, Aluminum or Fabricated Steel | | | |
|-----------------------|---|----|------|------|-------------|---|----------|----------|------------|
| | CC HD | XD | CC-B | U-HD | Low Profile | EuroBucket Super EuroBucket | Style AA | Style AC | Continuous |
| 3 X 2 | ● | | | | | | | | |
| 4 X 2-3/4 | | | | | | | | | |
| 4 X 3 | | | | | | | | | |
| 4 X 3-1/2 | | | | | | ● | | | |
| 5 X 3-1/2 | | | | | | | ● | | |
| 5 X 4 | ● | | ● | | ● | | | | |
| 6 X 4 | ● | | ● | ● | ● | | ● | | |
| 7 X 4 | ● | | ● | ● | ● | | | | |
| 5 X 4-1/2 | | | | | | ● | | | |
| 7 X 4-1/2 | | | | ● | ● | | ● | | |
| 6 X 5 | ● | | ● | | ● | ● | | | |
| 7 X 5 | ● | | ● | | ● | | | | |
| 8 X 5 | ● | | ● | | ● | | ● | | ● |
| 9 X 5 | ● | | ● | | ● | | | | |
| 10 X 5 | ● | | ● | | ● | | | | ● |
| 11 X 5 | ● | | ● | | ● | | | | |
| 12 X 5 | ● | | ● | | ● | | | | |
| 15 X 5 | | | | | | | ● | | |
| 19 X 5 | | | | | | | ● | | |
| 7 X 5-1/2 | | | | | | ● | | | |
| 8 X 5-1/2 | | | | | | ● | | | |
| 9 X 5-1/2 | | | | ● | ● | | | | |
| 20 X 5-1/2 | | | | ● | ● | | | | |
| 8 X 6 | ● | | ● | | ● | | | | ● |
| 9 X 6 | ● | | ● | | ● | | | | ● |
| 10 X 6 | ● | | ● | | ● | | | | ● |
| 11 X 6 | ● | | ● | | ● | | ● | | ● |
| 12 X 6 | ● | | ● | | ● | | ● | | ● |
| 13 X 6 | ● | | ● | | ● | | | | ● |
| 14 X 6 | ● | | ● | | ● | | | | ● |
| 9 X 6-1/2 | | | | | | ● | | | |
| 11 X 6-1/2 | | | | | | ● | | | |
| 10 X 7 | ● | | ● | | ● | | | | ● |
| 11 X 7 | ● | | ● | | ● | | | | ● |
| 12 X 7 | ● | | ● | | ● | ● | | | ● |
| 13 X 7 | ● | | ● | | ● | | | | ● |
| 14 X 7 | ● | | ● | | ● | | | | ● |
| 15 X 7 | ● | | ● | | ● | | | | ● |
| 16 X 7 | ● | ● | ● | | ● | | ● | | ● |
| 18 X 7 | ● | | ● | | ● | | | | ● |
| 20 X 7 | ● | | ● | | ● | | | | ● |
| 10 X 8 | ● | | ● | | ● | | | | ● |
| 11 X 8 | ● | | ● | | ● | | | | ● |
| 12 X 8 | ● | | ● | | ● | | | | ● |
| 13 X 8 | ● | | ● | | ● | | ● | | ● |
| 14 X 8 | ● | | ● | | ● | | | | ● |
| 15 X 8 | ● | | ● | | ● | | | | ● |
| 16 X 8 | ● | | ● | | ● | | | | ● |
| 18 X 8 | ● | | ● | | ● | | ● | | ● |
| 20 X 8 | ● | | ● | | ● | | | | ● |
| 22 x 8 | | | | | | | | | |
| 24 X 8 | | | | | | | | | |
| 13 X 8-1/2 | | | | | | ● | | | |
| 15 X 8-1/2 | | | | | | ● | | | |
| 16 X 9 | ● | | | | ● | | | | |
| 20 X 9 | ● | | | | ● | | | | |
| 16 x 10 | | ● | | | ● | | | | |
| 18 X 10 | | | | | | | ● | | ● |
| 20 x 10 | | | | | | | | ● | ● |
| 24 X 10 | | | | | | | | ● | ● |

Polyethylene, Nylon or Urethane Style CC-HD, XD & U-HD:



A heavy duty agricultural bucket for handling grains, feeds, fertilizers, seeds, salt, sand, chemicals, and a variety of other free flowing materials. Polyethylene is ideal for most applications, while nylon or urethane is recommended for highly abrasive products or extremely high throughput elevators.

Polyethylene, Nylon or Urethane Low Profile:



The same CC-HD, XD or U-HD style agricultural duty bucket as described above only modified to a "low profile" to allow closer spacing on the belt. Used to increase bucket elevator capacity over what can be achieved using conventional buckets and spacings.

Polyethylene, Nylon, Urethane Super EuroBucket & EuroBucket:



A European style agricultural duty bucket molded in a "low profile" configuration. Super EuroBuckets and EuroBuckets are a direct interchange/replacement of European pressed steel and molded nonmetallic buckets.

Nylon, Polyethylene or Urethane Style AA and AC:



An industrial duty bucket for handling foundry sand, sand and gravel, coal, fertilizers, clay, salt and many other industrial materials.

Ductile Iron or Aluminum Style AA and AC:



An industrial duty bucket for handling stone, foundry sand, sand and gravel, coal, fertilizers, clay, salt and many other industrial materials. Iron is ideal for large, dense, sluggish products or sharp cutting products such as crushed glass. Aluminum is a light weight bucket for nonabrasive products in hot applications (250°F to 400°F / 121°C to 204°C) where nonmetallic buckets can not be used because of the high temperature.

Fabricated Steel Style CCB, Nu-Hy and Sweetheart:



Agricultural duty buckets for handling grain, feeds, fertilizers, seeds, salt, sand, chemicals, food products, and a variety of other free flowing materials. Steel is ideal for sharp cutting products such as crushed glass and hot applications (over 275°F / 135°C) where nonmetallic buckets can not be used.

Fabricated Steel Continuous:



An agricultural and/or industrial duty bucket designed for use on "continuous type" bucket elevators. Runs at slow speed for gentle handling of a wide range of sluggish or fragile materials. Select sizes available in nylon.

No. 1 Norway Flat Countersunk Head:

A large diameter thin flat countersunk head bolt with plenty of surface area to secure the bucket and minimize chances of head "pull through" during hang ups. For use on pulleys larger than 6 inches in diameter. **Select sizes available with metric threads.**

No. 3 Eclipse Slotted Head:

A smaller diameter ribbed and slotted head bolt for use on pulleys 6 inches and smaller in diameter.

Fanged & 3-Prong Western Head:

A large diameter thin countersunk head bolt similar to a No. 1 but with two fangs on the underside of head. Fangs penetrate the belt and prevent the bolt from turning during installation and removal. For use on pulleys larger than 6 inches in diameter. Pointed end aids in installation of bolt. 3 prong design is similar to fanged head except has 3 small prongs to grip belt. **Select sizes available with metric threads.**

| Length (Nominal) Inches | No. 1 Norway | | | | No. 3 Eclipse | | Fanged | | Western 3-Prong | | |
|-------------------------|--------------|---------|--------|--------|---------------|---------|--------|---------|-----------------|--------|---------|
| | 1/4-20 | 5/16-18 | 3/8-16 | 1/2-13 | 1/4-20 | 5/16-18 | 1/4-20 | 5/16-18 | 3/8-16 | 1/4-20 | 5/16-18 |
| 3/4 | ■ | ■ | ■ | ■ | ■ | ■ | ■ | ■ | ■ | ■ | ■ |
| 1 | ■ | ■ | ■ | ■ | ■ | ■ | ■ | ■ | ■ | ■ | ■ |
| 1-1/4 | ■ | ■ | ■ | ■ | ■ | ■ | ■ | ■ | ■ | ■ | ■ |
| 1-1/2 | ■ | ■ | ■ | ■ | ■ | ■ | ■ | ■ | ■ | ■ | ■ |
| 1-3/4 | ■ | ■ | ■ | ■ | ■ | ■ | ■ | ■ | ■ | ■ | ■ |
| 2 | ■ | ■ | ■ | ■ | ■ | ■ | ■ | ■ | ■ | ■ | ■ |
| 2-1/4 | ■ | ■ | ■ | ■ | ■ | ■ | ■ | ■ | ■ | ■ | ■ |
| 2-1/2 | ■ | ■ | ■ | ■ | ■ | ■ | ■ | ■ | ■ | ■ | ■ |
| 2-3/4 | ■ | ■ | ■ | ■ | ■ | ■ | ■ | ■ | ■ | ■ | ■ |
| 3 | ■ | ■ | ■ | ■ | ■ | ■ | ■ | ■ | ■ | ■ | ■ |

● Steel ■ Zinc Plate ◆ Stainless

Contact Tapco for other material options.

Elevator Buckets

AA Elevator Bucket HIGH DENSITY POLYETHYLENE

12
SIZES
STYLE AA



PRIME
VIRGIN
POLYETHYLENE

INDUSTRIAL STYLE FOR HANDLING:
FOOD GRADE APPLICATIONS, SUGAR, SALT, COFFEE BEANS,
CHEMICALS, MINERALS, WOOD CHIPS

FEATURES:
LONG LASTING, TOUGH, LIGHT WEIGHT, NONSPARKING,
NONCORROSIVE, THICK WALLS, UNIFORM DISCHARGE

TECHNICAL INFORMATION:

STYLE: AA.

DESIGN: Centrifugal discharge.

MATERIAL: Prime virgin high density linear polyethylene.

METHOD OF MANUFACTURE: Injection molded.

COLOR: White.

TEMPERATURE RANGE: -60° F to + 200° F. (-51° C to +93° C).

FLAMMABILITY: The high density polyethylene used in Tapco buckets is termed "slow burning". It has been tested under ASTM Test No. D635. It also meets the criteria for approval under the Motor Vehicle Safety Standard No. 302 and Underwriters' Laboratory Bulletin No. 94. Combustion in an excess of air results in harmless by-products (fumes) which are nontoxic.

DRILLING: No charge for standard belt or chain drillings when order totals 50 or more pieces of the same size. Contact Tapco for quotation on orders of less than 50 and/or special drill pattern requirements.

VENTING: Available on request. Contact Tapco for recommendations.

USABLE CAPACITY: Tapco recommends using 75% of gross, (100%) capacity.

SPACING: A common spacing would be nominal projection plus 4", however both closer and greater spacings may be used depending upon the application.

INTERCHANGEABILITY: Can be intermixed with existing metallic or nonmetallic buckets. Some care should be taken that the leg does not become too far out of balance. Bucket projection varies by manufacturer and material. Check elevator for proper clearances. Contact Tapco for recommendations.

INSTALLATION: Fanged elevator bolts and nylon insert lock nuts are recommended for pulleys 6" in diameter and over. No. 3 Eclipse slotted head elevator bolts are recommended for pulleys under 6" in diameter. **Flat steel washers must be placed inside the bucket under the nuts.** Check elevator for proper clearances.

FDA STATUS: Polyethylene used meets the requirements of the Food Additives Law and Regulation No. 177.1520.

RECOMMENDATIONS: AA white polyethylene buckets are ideal for use in applications requiring food grade components.

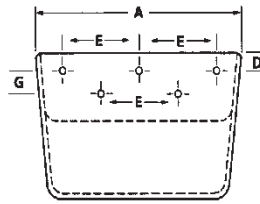
LIMITATIONS: Polyethylene buckets should not be used with the following: (1) Materials over 200°F/93°C. (2) Sharp edged material such as crushed glass or oyster shells. (3) Large dense materials such as gravel and ores.

CAUTION: Welding and cutting on elevator legs without taking proper precautions is extremely dangerous and can cause a violent explosion. Polyethylene buckets can be ignited and will burn from improper welding and cutting.

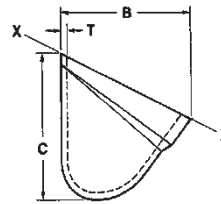
IMPORTANT: When elevating certain materials that harden or setup with moisture, a Tapco metallic digger bucket should replace every 10th polyethylene bucket. In some instances ductile iron AA style buckets (See page 49) will not have sufficient projection to protect the polyethylene bucket. It will be necessary to use a pad or spacer behind the digger bucket. Contact Tapco for recommendations.

Elevator Buckets

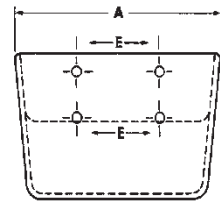
HIGH DENSITY POLYETHYLENE ELEVATOR BUCKETS



Back View
Belt Pattern



End View



Back View
Chain Pattern

STYLE AA BUCKETS

| SIZE (Nominal) Millimeter | SIZE (Nominal) Inches | Dimensions-Actual (Inches) | | | | Hole Drilling-Standard (Inches) | | | | | Capacity ① | | | | Approx. Weight (Pounds) |
|---------------------------------|-----------------------------|------------------------------------|------------|------------|---------------------|---------------------------------|-----------------------|------------------|-----------------------|----------------------|------------|---------|----------------|---------|-------------------------------|
| | | Tolerance A, B & C ±1/4" T ± 1/32" | | | | | | | | | | | Tolerance ± 3% | | |
| | | Length A | Proj. B | Depth C | Thick- ness T | Center to Center E | Number Of Holes | Bolt Diameter | Distance Down D | Between Rows G | Gross X-X | | Usable | | |
| | | | | | | | | | | | Cu. In. | Cu. Ft. | Cu. In. | Cu. Ft. | |
| 120-70 | 4 X 2-3/4 | 4-1/4 | 3 | 3-1/8 | 3/16 | 2-5/16 | 2 | 1/4 | 3/4 | -- | 14.7 | .008 | 11.0 | .006 | 0.22 |
| 140-90 | 5 X 3-1/2 | 5-3/8 | 3-3/4 | 3-3/4 | 1/4 | 3-3/16 | 2 | 1/4 | 1 | -- | 29.0 | .017 | 21.8 | .013 | 0.37 |
| 160-120 | 6 X 4 | 6-3/8 | 4-1/4 | 4-1/2 | 1/4 | 4-3/8 | 2 | 1/4 | 1 | -- | 48.6 | .028 | 36.4 | .021 | 0.50 |
| 180-120 | 7 X 4-1/2 | 7-3/8 | 4-3/4 | 5 | 1/4 | 2-1/2 | 3 | 1/4 | 1 | -- | 74.8 | .043 | 56.1 | .032 | 0.70 |
| 200-140 | 8 X 5 | 8-3/8 | 5-1/4 | 5-1/2 | 1/4 | 3 | 5 | *1/4 | 7/8 | 1 | 101.0 | .058 | 75.8 | .044 | 1.00 |
| 260-160 | 10 X 6 | 10-1/2 | 6-1/2 | 6-5/8 | 1/4 | 3-1/2 | 5 | *1/4 | 7/8 | 1 | 191.0 | .111 | 143.2 | .083 | 1.54 |
| 300-180 | 12 X 7 | 12-1/2 | 7-5/8 | 7-3/4 | 3/8 | 4-1/2 | 5 | ▲5/16 | 7/8 | 1 | 307.5 | .178 | 230.6 | .133 | 2.36 |
| 350-180 | 14 X 7 | 14-1/2 | 7-5/8 | 7-3/4 | 3/8 | 4 | 7 | 5/16 | 7/8 | 1 | 370.8 | .215 | 278.1 | .161 | 2.70 |
| 350-215 | 14 X 8 | 14-1/2 | 8-7/8 | 8-3/4 | 1/2 | 4 | 7 | 5/16 | 7/8 | 1 | 475.8 | .275 | 356.8 | .206 | 3.76 |
| 400-215 | 16 X 8 | 16-1/2 | 8-7/8 | 8-3/4 | 1/2 | 4-1/2 | 7 | ▲5/16 | 7/8 | 1 | 554.5 | .321 | 415.9 | .241 | 4.30 |
| 450-215 | 18 X 8 | 18-1/2 | 8-7/8 | 8-3/4 | 1/2 | 5 | 7 | ▲5/16 | 7/8 | 1 | 629.1 | .364 | 471.8 | .273 | 4.84 |
| 450-260 | 18 X 10 | 18-1/2 | 10-3/4 | 10-3/4 | 1/2 | 5 | 7 | ▲5/16 | 7/8 | 1 | 963.1 | .557 | 722.3 | .418 | 7.14 |

① Tapco recommends using gross x .75, for usable capacity.

* Buckets can be drilled for 1/4" or 5/16" bolts, please specify. 1/4" is standard.

▲ Buckets can be drilled for 5/16" or 3/8" bolts, please specify. 5/16" is standard.

Elevator Bolts - 4B[®]

EURO BOLT

Steel / Stainless steel 304 & 316

- DIN 15237
- Actual min core hardness 90-95 Rockwell B
- ISO grade 5.8 (exceeds DIN)
- Large bolt head diameter
- Fully threaded Zinc plated as standard or stainless



REF 70 Bolts

Steel / Stainless steel 304 & 316

- Steel - ISO grade 5.8
- Concave head with 4 lugs on the underside to prevent rotation when tightening
- Whitworth or metric



FANG BOLTS

Steel

- Pointed tip - Easy to fit "blind" through belt
- Unique Design - Fangs lock bolt in place while nut is tightened
- Large bolt head diameter
- Flat bolt head - reduces risk of rip out of bolt
- Extensively tested and used in USA grain industry
- Suitable for recessed or non recessed holes



EASIFIT Bolts

Steel / Stainless steel 316

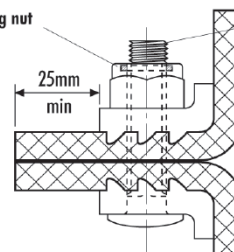
- Shank formed with hexagon tip (easy fastening with special tool)
- Speeds fitting & removal of bolts
- Improves elevator safety
- Reduces belt damage caused by standard bolts



JACKSON GRIPWELL

- For elevator belts up to 630 kN/m and up to 7.0mm max. thickness.
- Vice grip between serrated jaws.
- Use 2 fasteners of equal length per joint. e.g. 2 x 150mm Supergrip fasteners for a 300mm wide belt.

Nylon insert self-locking nut
Ecrou frein



5/16 Whitworth high tensile plated bolt
(M8) zingué CL8.8 boulon