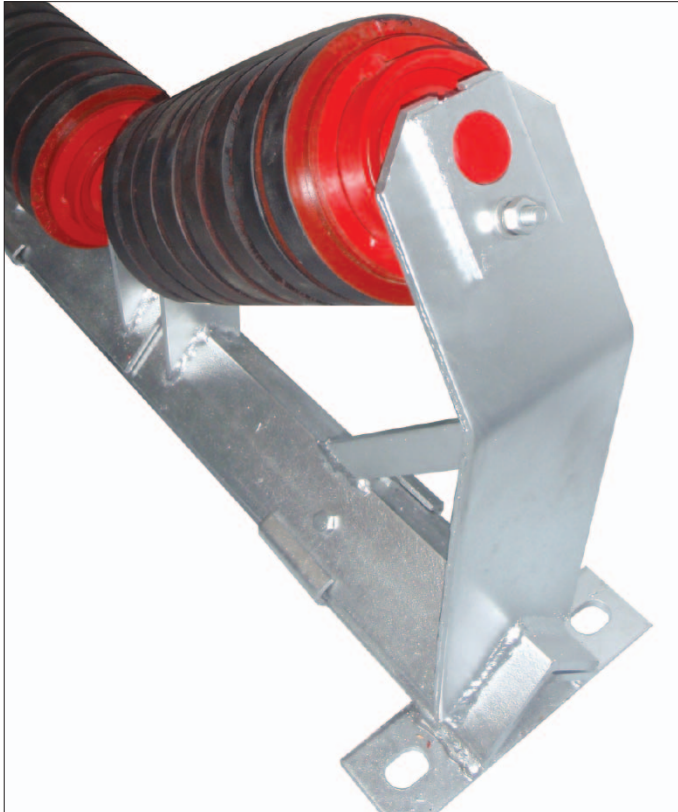




BULK MATERIALS HANDLING SOLUTIONS
MADE BETTER

K-Impact Rollers



K-Impact Rollers are used in conveyor loading and transfer point applications. They should be used in purpose built strengthened frames. Ideally with roller retainer plates fitted to stop the roller from dislodging from the brackets under dynamic load.

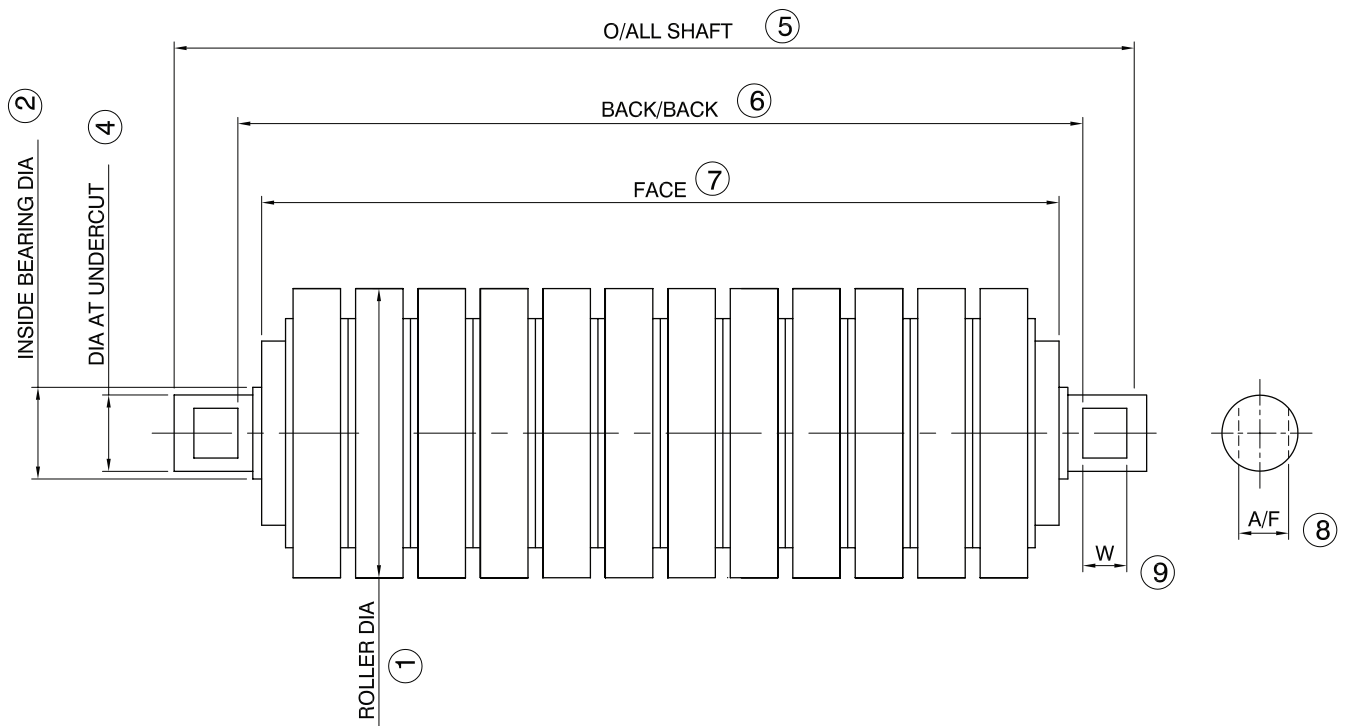
K-Impact Rollers protect the belt where the lumps, weight or shape can cause damage to the belt cover or ply from the free fall of material. The construction of the rollers consist of a series of resilient rubber discs assembled onto an inner heavy duty steel tube. For the correct selection of trough or flat carry types this takes into consideration maximum lump, freefall height and material bulk density.



Kinder and Co. Pty. Ltd. Copyright © 2008 ABN 28 006 489 238

+61 (3) 9587 9244 +61 (3) 9587 9344 sales@kinder.com.au www.kinder.com.au

K-Impact Rollers



Specifications subject to change without notice.
 Certified drawings are available on request.