

## K-Containment Seal

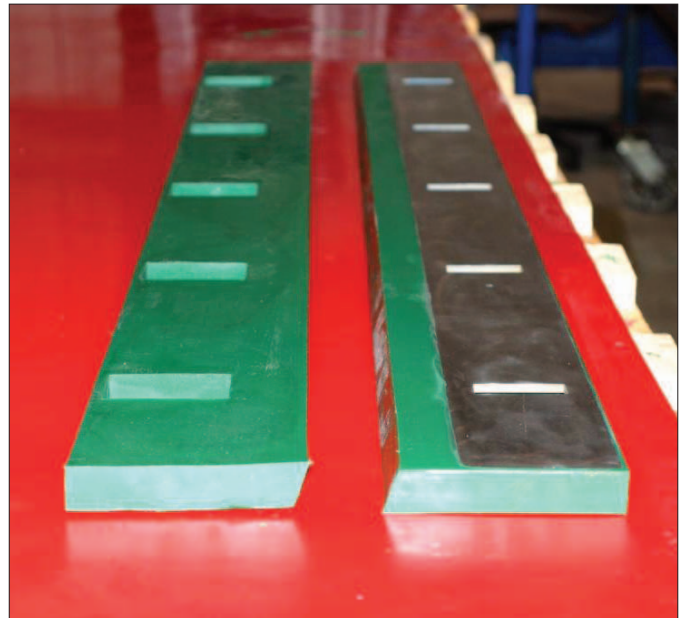
The critical component in any conveyor transfer point is an effective sealing system. The seal should be located where the material is being loaded and continue to where it becomes stable. This is the last position to effectively control spillage and dust.

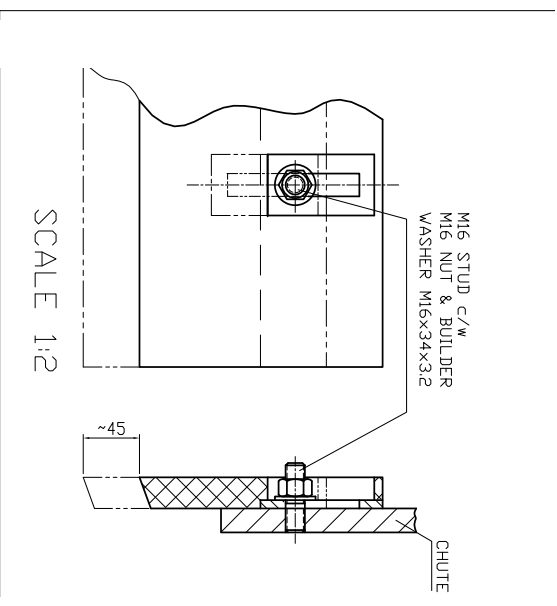
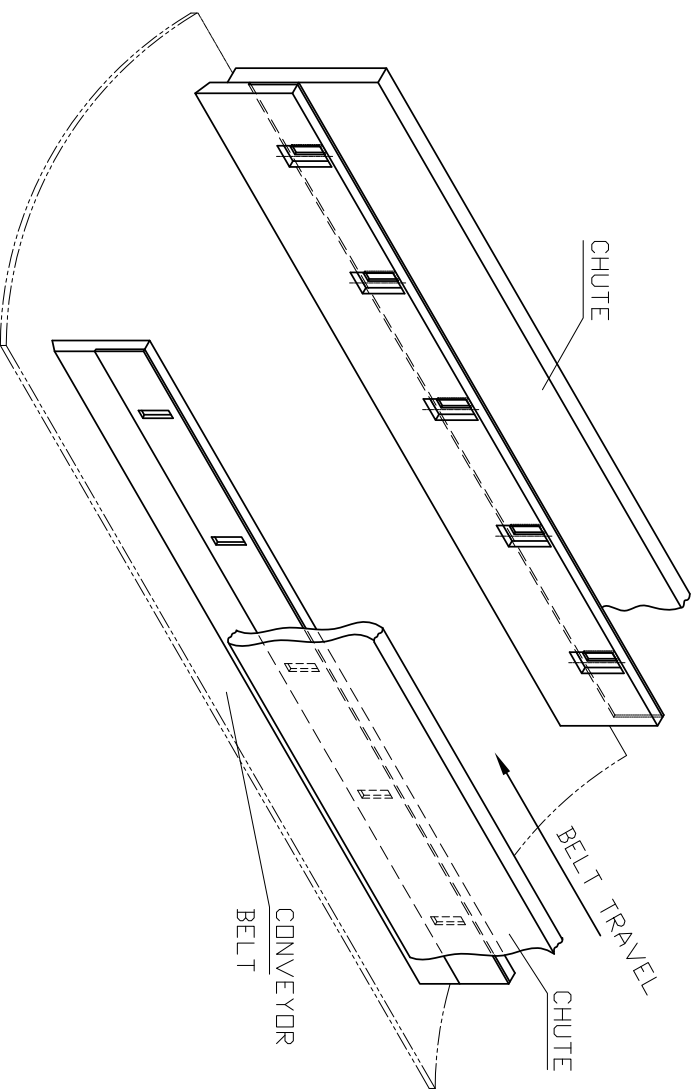
To enhance the effectiveness of the outer seal or skirting the loading area should be properly supported.

In many cases the outer flexible seal is ineffective in controlling spillage as an unsupported belt trying to contain the full weight of material load would be inadequate.

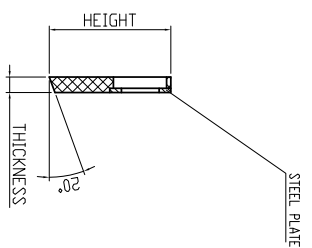
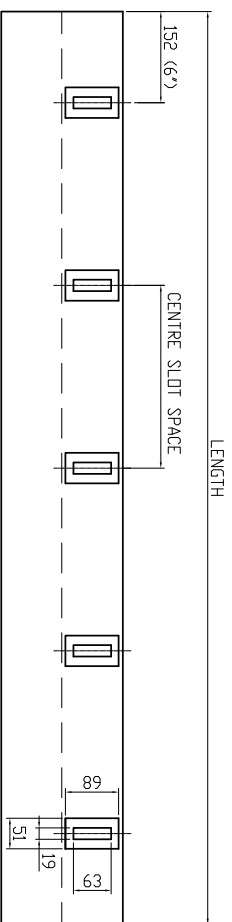
To effectively contain bulk material the K-Containment Seal should be installed inside the chute to handle high internal chute pressure and reduce the load on the skirting seal. The seal can be supplied beveled or straight.

The high performance low friction engineered polyurethane system offers exceptional resistance to wear. The slotted arrangement allows for installation adjustment to ensure that material cannot be entrapped leading to premature belt damage.





AVAILABLE SIZES	IMPERIAL	METRIC
HEIGHT	6" / 8" / 10" / 12"	150mm/203mm/254mm/304mm
LENGTH	60' / 96'	1524mm , 2438mm
THICKNESS	1" / 2"	25mm / 50mm
CENTRE SLOT PITCH	12" / 21"	305mm / 533mm
BEVEL	20° / 0°	



## K-Containment Seal