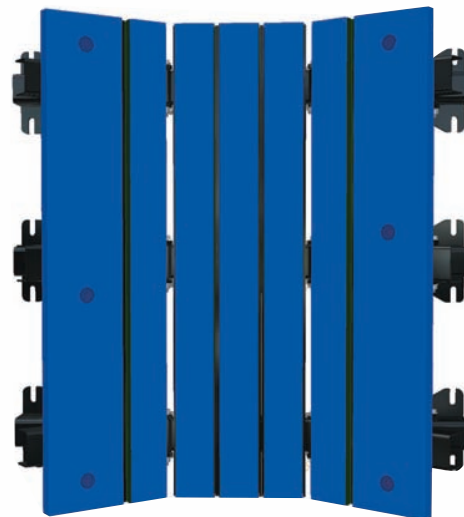


LOAD ZONE™

CONVEYOR BELT SUPPORT SYSTEMS

Argonics has developed rock-solid, high-performance impact and slider beds for light- to medium-duty applications. The new Load Zone beds provide a rugged, straight-forward design for efficiency and ease of use in the field.

Our new Load Zone bed is manufactured with folding trough wings and boasts an extremely rugged hinge system with two ½" support brackets per side on each support leg. The collapsible sides make installation and bar change out fast and efficient.



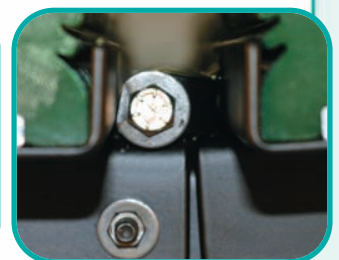
Top view of Load Zone bed

BENEFITS

- Load Zone impact and slider beds are designed to exceed CEMA Standard 575-2000
- Available for CEMA B, C and D idler classes
- Ensures an effective sealing surface for skirting
- Frame construction optimized for maximum strength
- Collapsible trough wings for easy installation and bar replacement
- Patented impact bars
- Durable powder coat finish
- 7 gauge rugged steel channels
- Engineered to be resilient in the harshest of operating environments



Hinge top view



Hinge side view

KINDER **K**

BULK MATERIALS HANDLING SOLUTIONS
MADE BETTER

IMPACT

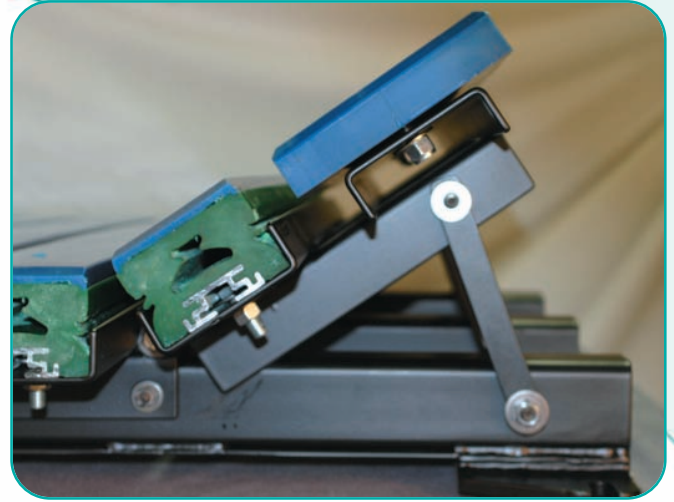
Argonics impact beds are some of the strongest in the industry with adjustable ½" plate steel support arms and 7 gauge channel support rails. And the strength doesn't end there. Four inch wide by three inch tall Kryptane® urethane impact bars with a ¾" layer of mechanically locked UHMW Polyethylene reduces friction, protecting the belt from excessive drag and wear. The Load Zone's impact bars also have an energy dispersion cavity that absorbs heavy impact for unsurpassed belt protection as well as a heavy-duty aluminum insert that will accept a standard ½" (13 mm) grade 8 bolt, eliminating the need for expensive T-bolts.

Each Load Zone impact or slider bed is engineered to fit your belt's width, trough angle and CEMA idler class without the need for shims, saving you valuable installation time in the field.

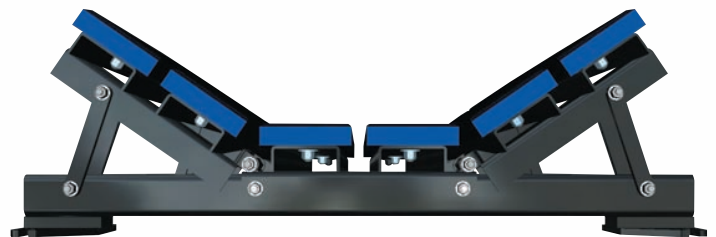
The Load Zone frame comes with a powder coated finish to extend the life of the bed in the harshest of operating climates.

SLIDER

Argonics slider beds are built just as rugged as the impact beds with adjustable ½" plate steel support arms and 7 gauge channel support rails. The slider bars are made of 1.5" thick UHMW Polyethylene which reduces friction, heat buildup and belt wear. The bars are attached to the bed with a ½" (13 mm) urethane coated bolt, creating a smooth surface across the full length of the bar.



Argonics Impact Bed



Argonics Slider Bed

LOAD ZONE™

CONVEYOR BELT
SUPPORT SYSTEMS



ARGONICS
ENGINEERED POLYURETHANE

Kinder and Co. Pty. Ltd. Copyright © ABN 28 006 489 238



+61 (3) 9587 9244



+61 (3) 9587 9344



sales@kinder.com.au



www.kinder.com.au